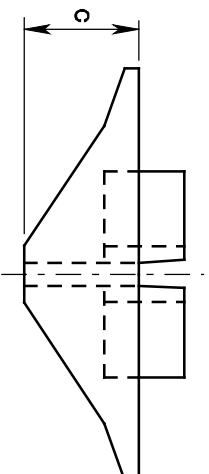
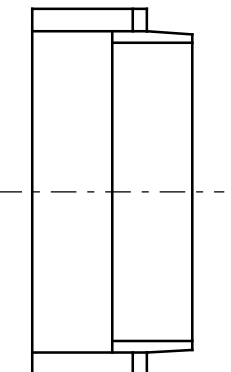


ORTHOGRAPHIC PROJECTION



FRONT

SIDE

DEPTH D	A	B	C	WEIGHT LBS.
10"	3/4"	3/4"	3"	17
12"	3/4"	3/4"	3 1/2"	24
14"	1"	1"	4"	41

NOTES:

1. MATERIAL - CAST STEEL (AASHTO M103 (ASTM - A27) GRADE 65-35, CLASS 2).
2. ALL FILLETS = 3/8"
3. ALL WELDS BETWEEN H-PILE AND POINT TO BE IN ACCORDANCE WITH ANSI/AASHTO/AWS BRIDGE WELDING CODE D1.5 SPECIFICATION (LATEST EDITION). WELD FLANGES TO FITTINGS ON OUTSIDE FACES.